

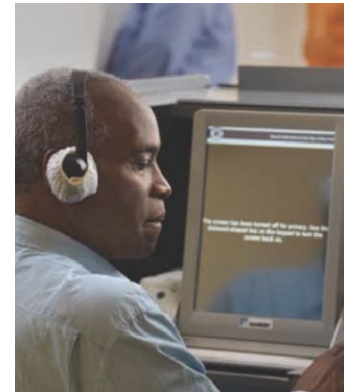
# *Mark It. Scan It.*

## *Vote The New Way.*

### **Marking your ballot using the Ballot Marking Device (BMD)**

#### **Follow these steps to mark your ballot using the BMD:**

- Decide how you will access and mark the ballot (Touch Screen, Key Pad (Braille), Sip & Puff Device, Rocker Paddle).
- Insert your ballot into the feed tray.
- Select your preferred language.
- Select each candidate and/or issue for which you intend to mark a vote.
- Your selections will be highlighted in yellow on the screen and be will be read through the headphones.
- Make sure the oval is filled in black.
- For write-in candidates, select “Write-in.”
- Select letters to type the name of a candidate and select “OK.”
- After completing your ballot, review your selections.
- To change a selection, select the contest or issue you would like to change and reselect the proper choice. Select “NEXT” to return to the summary screen.
- When finished, select “NEXT.” Select “Mark Ballot” to print your marked ballot.
- Take your printed ballot to the scanner area.
- If you would like assistance inserting your ballot into the scanner, a poll worker will assist you.



#### **Ways to access and mark the ballot:**



Headphones



Touch Screen



Braille Key Pad



Sip & Puff Device



Rocker Paddle



Find out more about the new way to vote at [www.vote.nyc.ny.us](http://www.vote.nyc.ny.us)  
or by calling **866-VOTE-NYC** (866-868-3692) **TTY 212-487-5496.**

